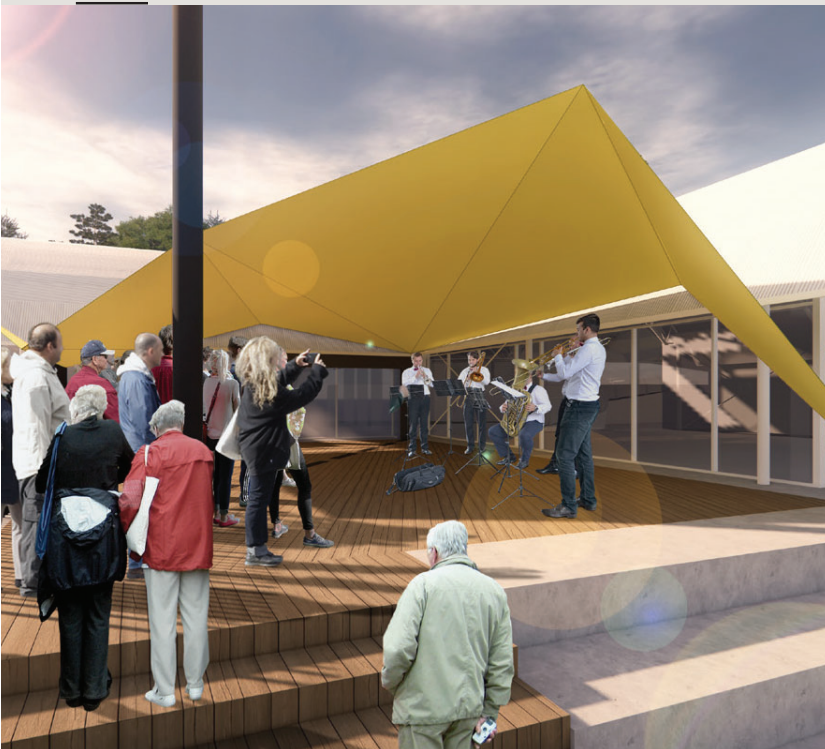


Goolwa Wharf Precinct Revitalisation Summary

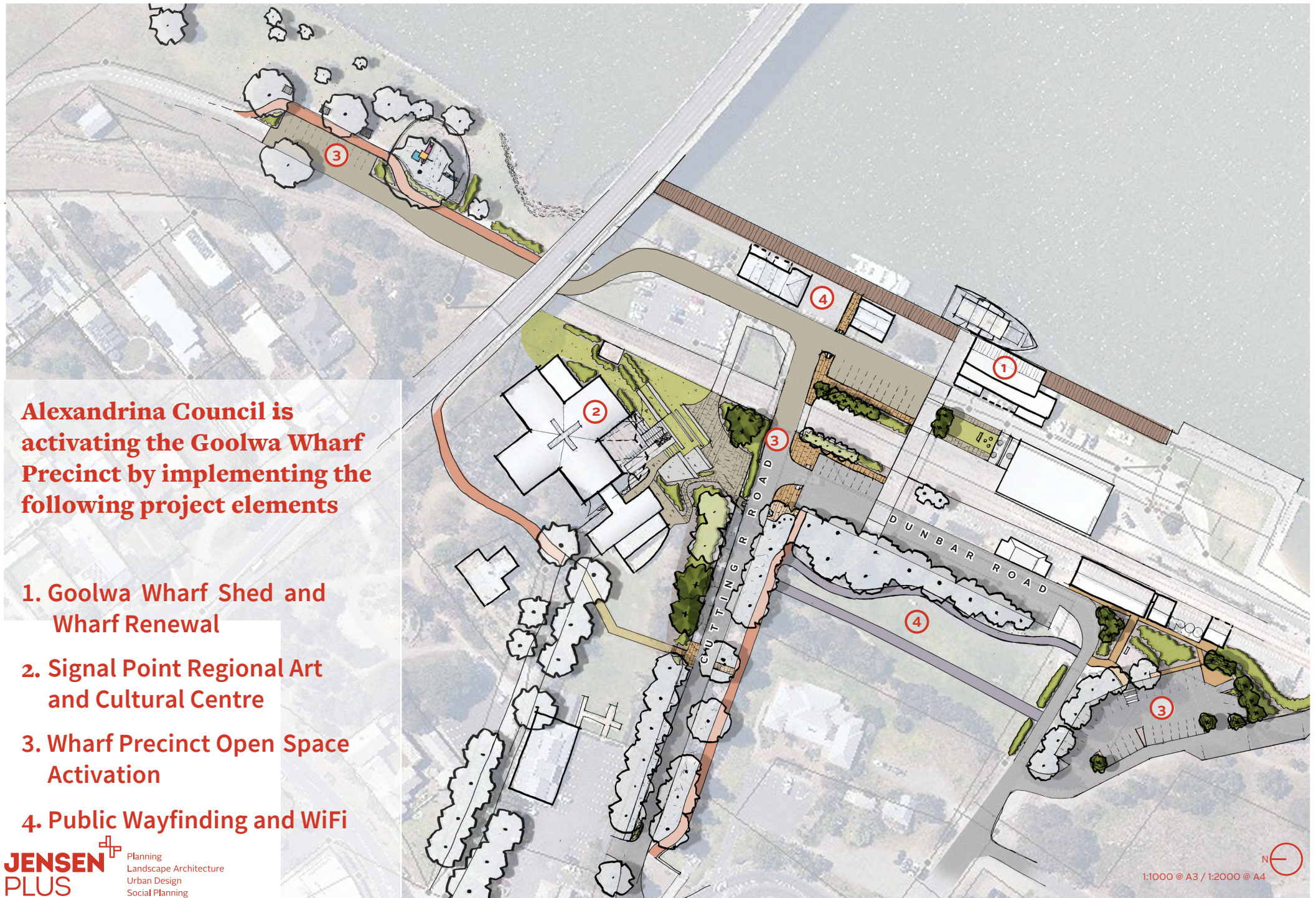
December 2019

Prepared for Alexandrina Council

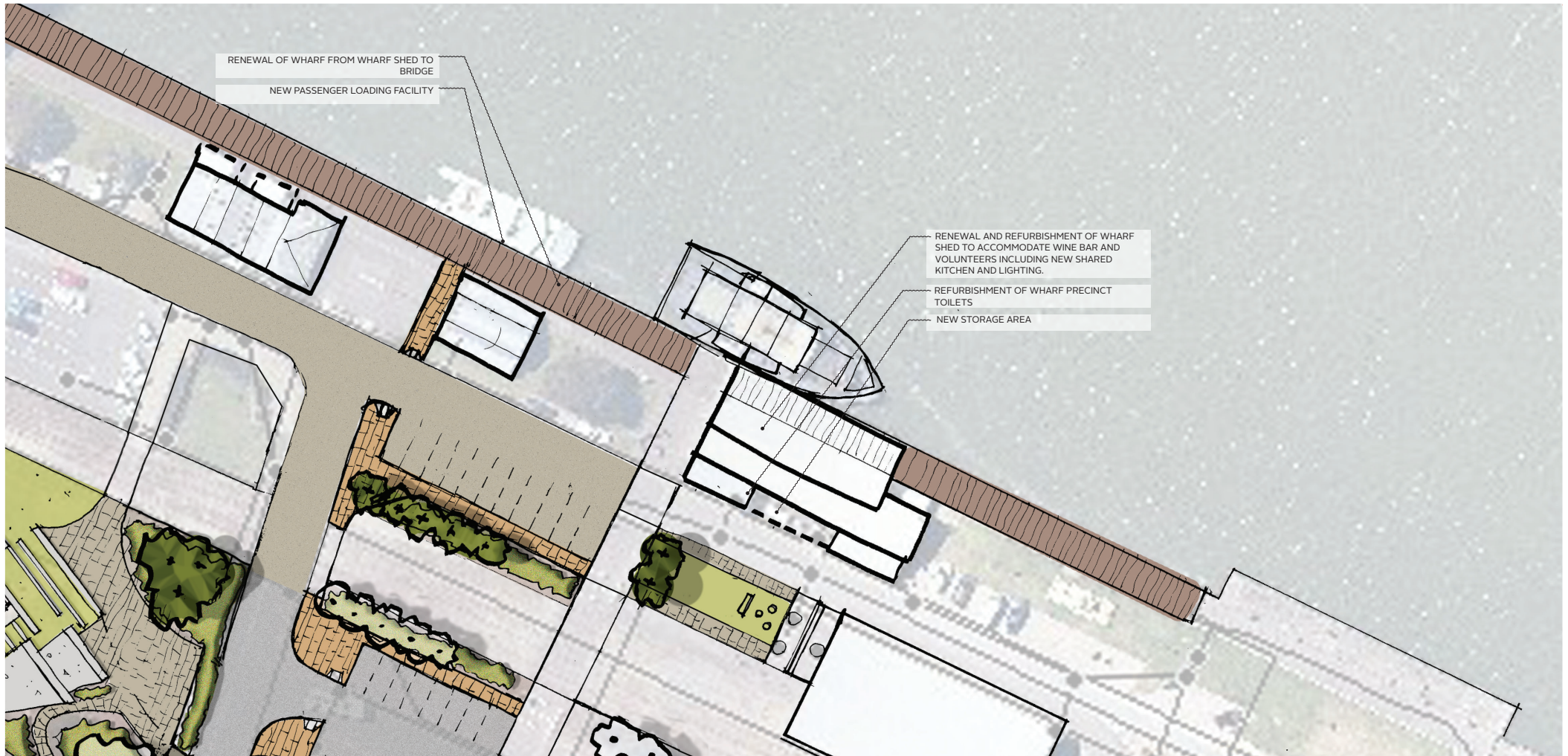


Alexandrina Council is activating the Goolwa Wharf Precinct by implementing the following project elements

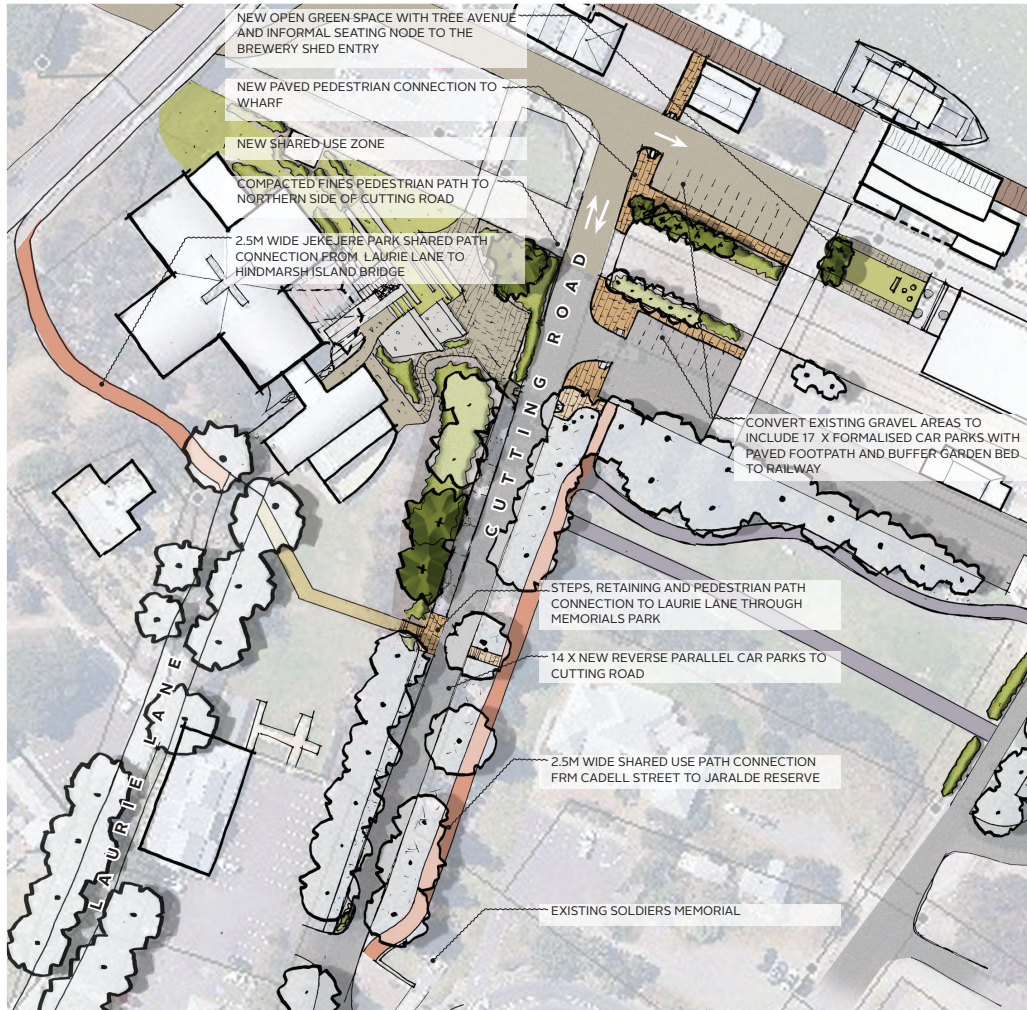
- 1. Goolwa Wharf Shed and Wharf Renewal**
- 2. Signal Point Regional Art and Cultural Centre**
- 3. Wharf Precinct Open Space Activation**
- 4. Public Wayfinding and WiFi**



1. Goolwa Wharf Shed and Wharf Renewal



2a. Wharf Precinct Open Space Activation - Wharf Precinct Entry



Artists Impression - Cutting Road Upgrade



Artists Impression - Open Green space adjacent Brewery Shed

2b. Wharf Precinct Open Space Activation - Market Car Park



Sealing car park



Seating node



Ornamental planting and tree avenues

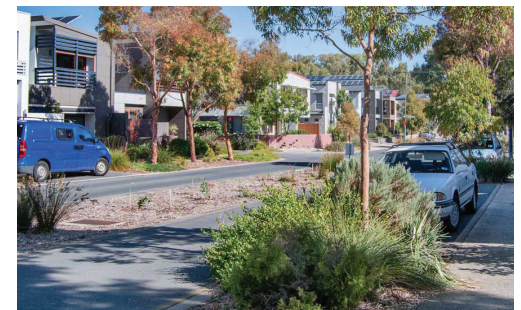
2c. Wharf Precinct Open Space Activation - Amelia Car Park



New Shared Use Path



Sealed Car Parking



Buffer Planting Treatments

2. Signal Point Regional Art and Cultural Centre

A new forecourt and entry canopy will connect the gallery to the Wharf Precinct and celebrate its riverfront address.

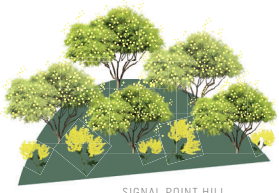


SIGNAL POINT_DEVELOPED DESIGN_CONCEPT

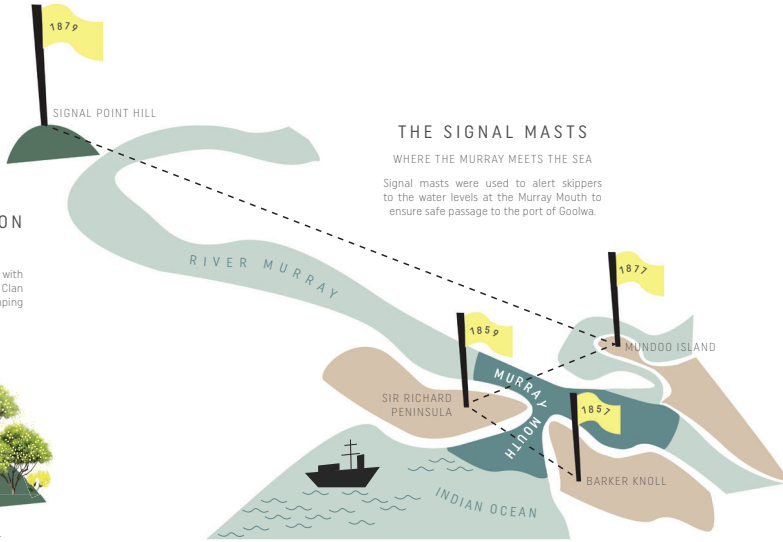
INDIGENOUS VEGETATION

SPLASHES OF GOLD

In spring time, Signal Point Hill was covered with bursts of golden wattle blooms. The Tanganinri Clan of the Ngarrindjeri people used the hill for camping and observation.



SIGNAL POINT HILL



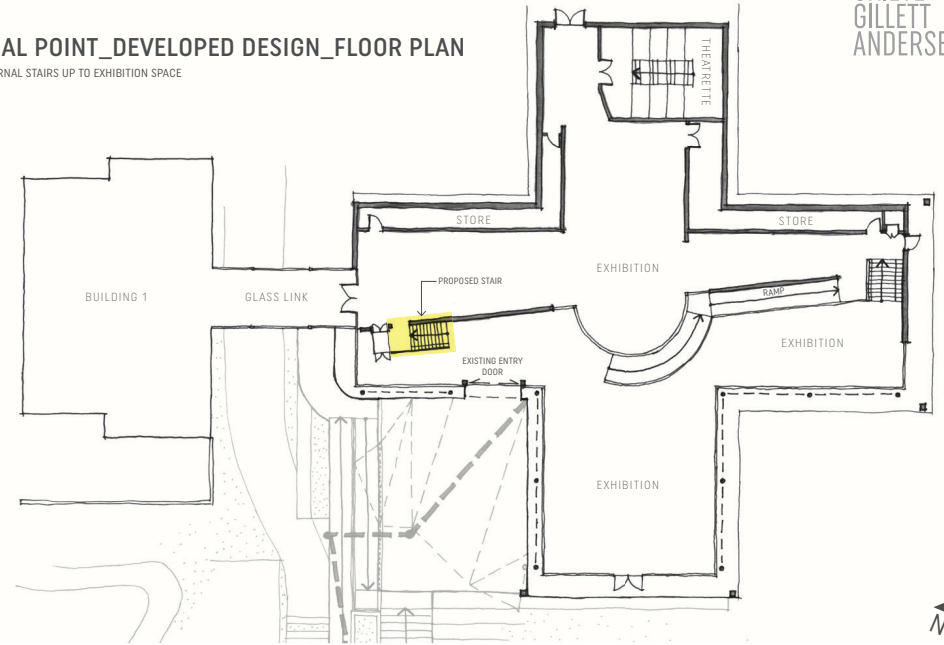
THE SIGNAL MASTS

WHERE THE MURRAY MEETS THE SEA

Signal masts were used to alert skippers to the water levels at the Murray Mouth to ensure safe passage to the port of Goolwa.

SIGNAL POINT_DEVELOPED DESIGN_FLOOR PLAN

NEW INTERNAL STAIRS UP TO EXHIBITION SPACE

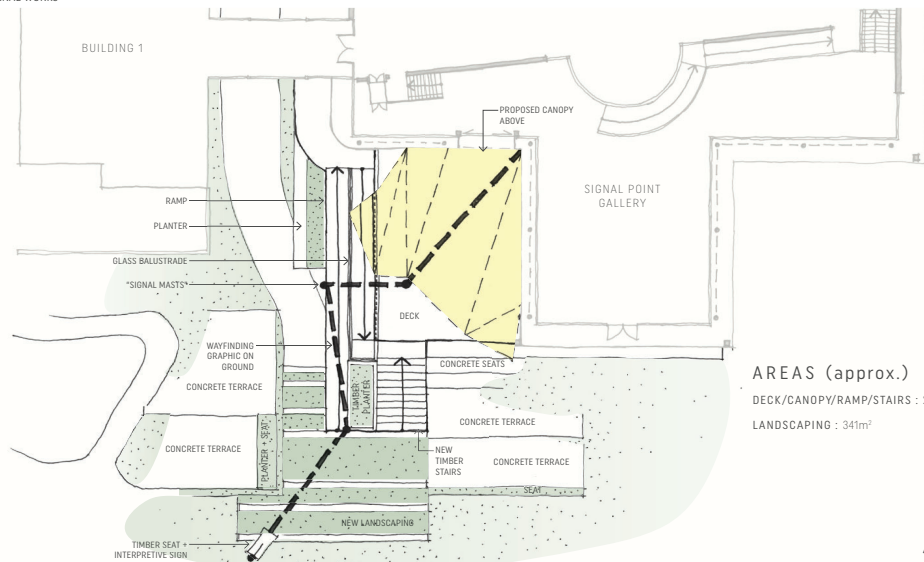


NTS



SIGNAL POINT_DEVELOPED DESIGN_FLOOR PLAN

NEW EXTERNAL WORKS



AREAS (approx.)

DECK/CANOPY/RAMP/STAIRS : 201m²

LANDSCAPING : 341m²

NTS



4. Public Wayfinding and WiFi

Existing Free WiFi Zone



Proposed Free WiFi Zone



Precinct Signage



Directional Signage



Maps



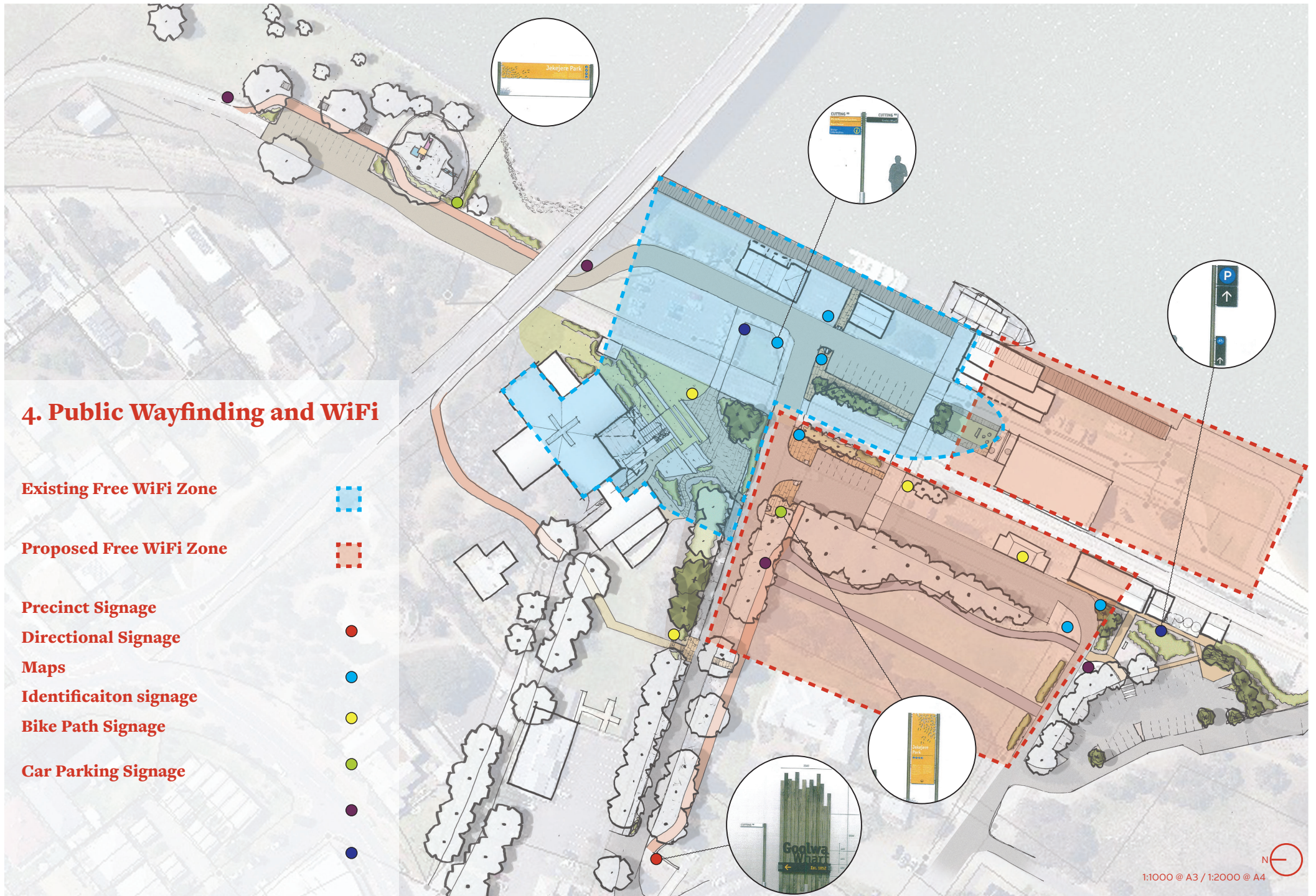
Identificaiton signage



Bike Path Signage



Car Parking Signage



1:1000 @ A3 / 1:2000 @ A4



Level 1, 21 Roper Street
Adelaide 5000 South Australia
08 8338 5511
admin1@jensenplus.com.au
www.jensenplus.com.au



JENSEN
PLUS

Planning
Landscape Architecture
Urban Design
Social Planning