



SERVICE STANDARDS FOR PARKS AND RESERVES

A summary of the activities we undertake and the standards we apply to deliver best-value landscapes for our growing and changing community



V	A	Description	Date
1	BC	Draft for Internal Review	24/07/2023
2	BC	Second Draft for content check	06/09/2023
3	BC	Final Review seeking approval/refinement	11/09/2023
4	BC	Issued	12/09/2023

CONTENTS

INTRODUCTION	02
SERVICE STANDARDS FOR PARK CATEGORIES	04
LEVEL A RESERVES	06
LEVEL B RESERVES	08
LEVEL C RESERVES	11
LEVEL D RESERVES	14
BOAT RAMPS, MARINAS, JETTIES AND SURROUNDS	16
RAILWAY CORRIDOR	17
OTHER RESERVES	18
MAINTENANCE PERFORMANCE GUIDE	19

INTRODUCTION

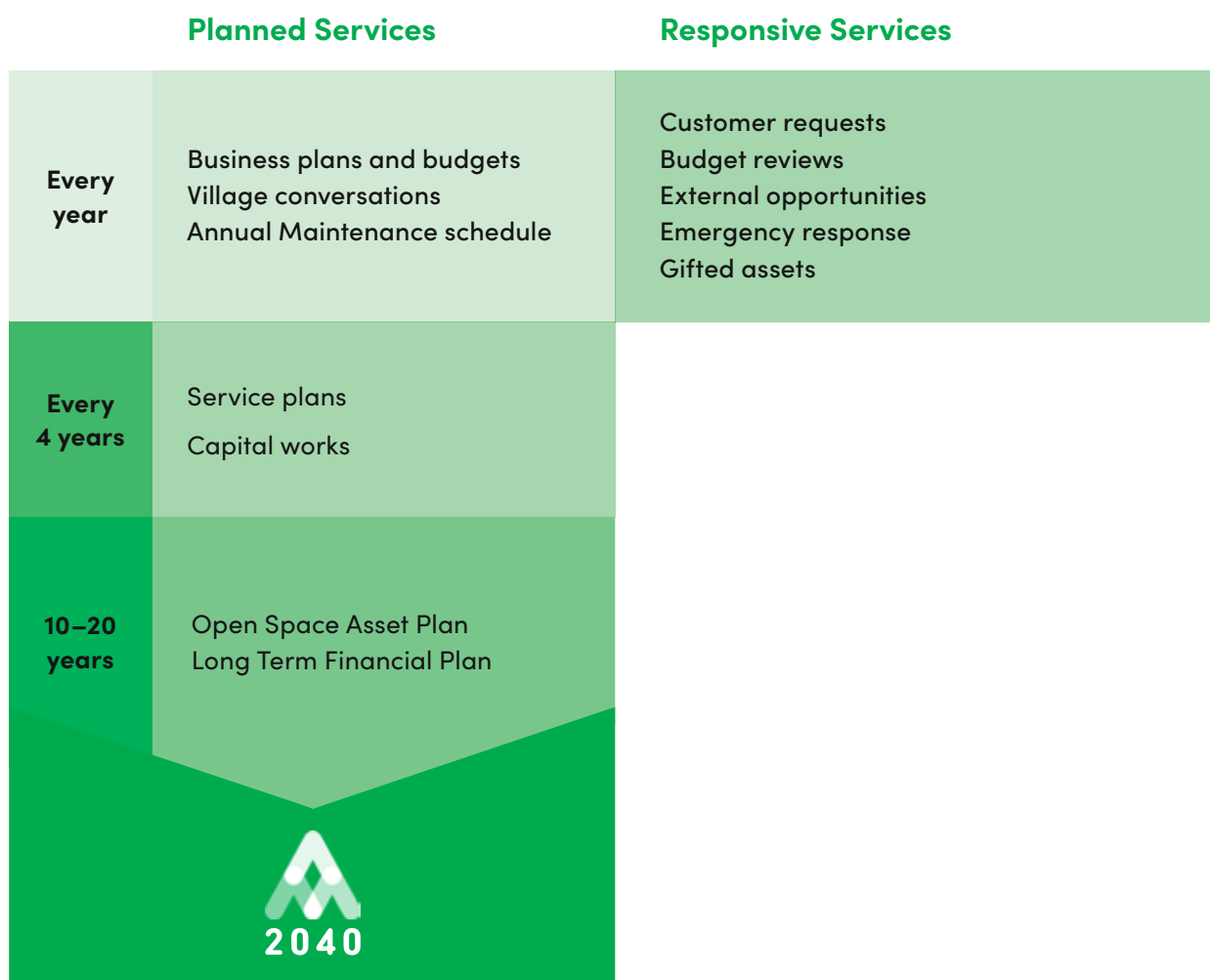
Alexandrina Council manages approximately 196 hectares of open space (roughly the same area as 100 Australian Rules football ovals) and about 13.5 hectares of mulched gardens. This service is delivered by 16 full time equivalent staff at an estimated cost of close to \$1M per annum.

The Alexandrina Council has a Parks & Gardens Maintenance Management Plan covering all parks and reserves within the district and are actively maintained by Council. The areas are used for recreational purposes and are relative to Council's towns, including:

- » Ashbourne
- » Belvidere
- » Chiton
- » Clayton
- » Currency Creek
- » Goolwa
- » Hindmarsh Island
- » Langhorne Creek
- » Middleton
- » Milang
- » Mt Compass
- » Strathalbyn
- » Port Elliot
- » Tolderol
- » Willyaroo
- » Woodchester (cemetery)

Council's parks, gardens and reserves are defined as 'Areas actively maintained that are under the care of Council's Field Services Department'. These areas are maintained annually, guided by four year planning and long term (10-20 year cost planning) in conjunction with the Council's Strategic Planning and Service Delivery Framework.

In addition to planned services, Council also manages unplanned or 'responsive' services. Such as emergency response and customer request, external grant opportunities and importantly, the acquisition or 'gifting' of assets through growth and development. The planned and responsive streams are summarised below:



SERVICE STANDARDS FOR PARK CATEGORIES

Council Parks and Gardens are maintained at differing levels in an effort to guide resource delivery for community benefit.

Council reserves are therefore categorised as follows:

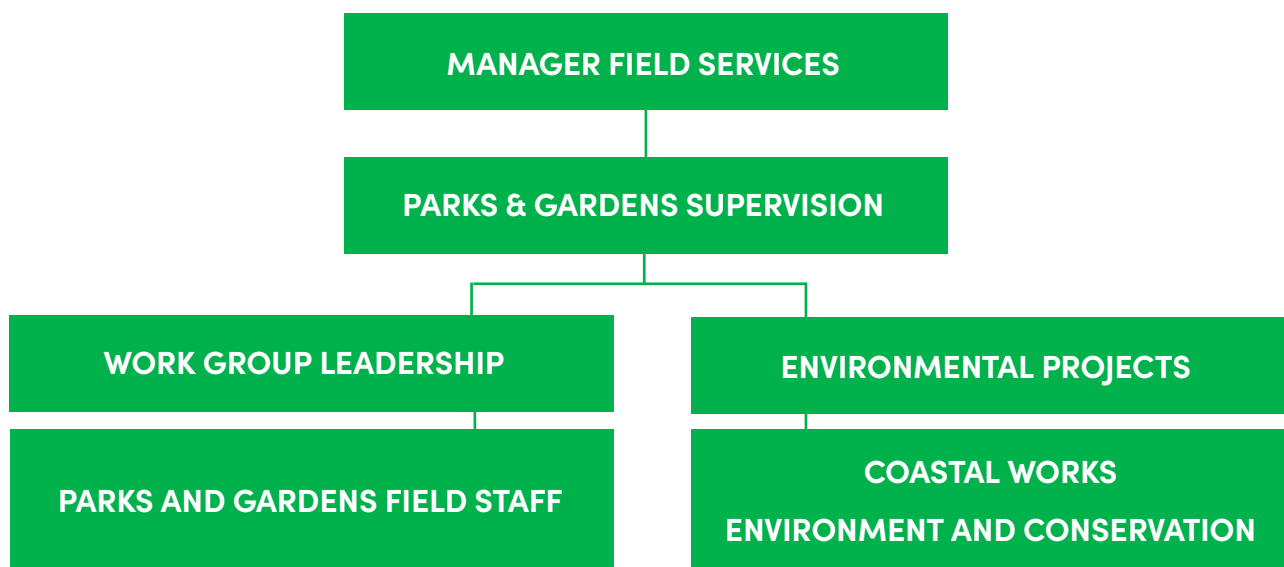
- » Level A
- » Level B
- » Level C
- » Level D
- » Boat Ramps, Marinas, Jetties and Surrounds
- » Railway Corridor
- » Other

Reserves are categorised for spatial and resource planning. Categories guide ongoing maintenance programs and budgeting to respond to change, including population growth, residential expansion or to meet changing expectations and needs of both ratepayers and visitors to our Council area.

We recognise that a healthy landscape contributes to a healthy environment, a healthy community and a healthy economy. Therefore, there are many factors that influence resourcing of parks and gardens and there are many benefits that come from appropriately maintained landscapes.

Alexandrina Council manages approximately 196 hectares of open space (roughly the same areas as 100 Australian Rules football ovals) and about 13.5 hectares of mulched areas. This service is delivered by 16 full time equivalent staff, including three casual and three trainees (2023) at an estimated total service cost of \$961,000 per annum (2020/21 - labour allocation only).

The Parks and Gardens structure has an inbuilt inspection and assessment role to determine how effectively teams are delivering on the standards within the Parks & Gardens Maintenance Management Plan. The service structure can be summarised as:



LEVEL A RESERVES

DESCRIPTION

- » High usage area with high exposure to the general public, including playing fields
- » Irrigated parkland with high visual amenity and in a centralised location
- » Facilities and infrastructure may include toilets, shelters, BBQ's, signage, fencing and playgrounds

LEVEL 'A' RESERVES



Goolwa

- » Amelia Park (Riverfront)
- » Arts Centre Garden
- » Bristow Smith Reserve & Goolwa Aquatic Club
- » Heritage Club Surrounds
- » Jaralde Park & Wharf
- » Medical Centre Park
- » Neighbour Reserve
- » Richard Ballard Park – (Riverfront) including SA Water site and 1546m²
- » Riverhaven Residential
- » Signal Point
- » Town Square

Middleton

- » Abbotts Reserve A
- » Soldiers Memorial Gardens

Milang

- » MSMG
- » Foreshore Residence

Mt Compass

- » Toilet Block Gardens
- » Victor Harbor Road Streetscape
- » Mt Compass Skate Park
- » Wetland Shelter Reserve

Port Elliot

- » Commodore Reserve
- » Continental Park
- » Harbour Master's Reserve
- » Horseshoe Bay (adjacent Flying Fish)
- » Lakala Reserve
- » Soldiers' Memorial Gardens
- » Town Square

Strathalbyn

- » Catherine St Garden/Donald
- » Colman Tce Car Park
- » Council Office/Library
- » Kenny Blake
- » Piper Crest Reserve
- » High St Garden
- » High Street Garden North (Muggies Corner)
- » Lions Park
- » Memorial Gardens
- » Railway Station
- » Rotary Park
- » Swimming Pool
- » New Streetscape Areas
- » Skate Park

Langhorne Creek

- » Primary School

SERVICE COST

- » The annual rate per M² for the maintenance of Level A reserves is estimated at: \$2.32
- » There is an additional cost per M² of irrigation per annum estimated at: \$1.50
- » Tree planting (maintenance - watering, fertilizer, pruning): \$15.00

INSPECTIONS

- » Level A reserves will be assessed quarterly against the requirements of this maintenance management plan with results supplied to works supervisors for actioning.
- » Playgrounds are inspected monthly and reviewed in more detail annually

MAINTENANCE ACTIVITIES

Garden Beds	<ul style="list-style-type: none">» Dead-heading of roses to be carried as required during growing season and annual maintenance/pruning and shaping.» Annual maintenance pruning of roses, shrubs and trees to be carried out June-July.» Garden beds to be mulched at a minimum level of 75 mm, all plants in good health and the bed is fully planted out.
Grass	<ul style="list-style-type: none">» Brush cutting, spraying herbicide and edging around structures, utility boxes trees and gardens to coincide with mowing.
Infrastructure	<ul style="list-style-type: none">» When staff are working in the park and observe any damaged infrastructure, if a risk is evident, the furniture is to be made safe and the Supervisor notified within 24 hours.» Infrastructure is to be available to the public in a clean condition.
Irrigation	<ul style="list-style-type: none">» Systems to be tested one month prior to irrigation season and all defects repaired.» Irrigation systems to be monitored during the growing season and when dry areas become visible, the system is tested and the necessary repairs actioned.
Litter	<ul style="list-style-type: none">» Regular clearance to be carried out when staff are working in that location prior to moving to the next task.
Mowing	<ul style="list-style-type: none">» To intervention level of: over 75mm, more than 50% of the area» Mowing for turf (playing fields) is undertaken to meet playing surface standards.
Paths	<ul style="list-style-type: none">» Formal paths are inspected quarterly to identify any hazards or risks above 10mm.
Playgrounds	<ul style="list-style-type: none">» Monthly inspections by Council Officer as per checklist and Australian Standards.
Signs	<ul style="list-style-type: none">» Interpretive and directional signage to be monitored for damage, fading and vandalism.
Trees	<ul style="list-style-type: none">» Have been pruned to reduce risk to infrastructure and general public. Fallen limbs, dead or damaged plants to be removed within 5 working days of identification.» Dead trees will be assessed by the Inspector to determine the action required. If a tree is assessed as high risk to property or person, arrangements will be made to remove the tree. If the tree is low risk and structurally sound, it may be left for habitat value.
Weed control	<ul style="list-style-type: none">» Herbicide usage to be carried out when visual at under 10 metres. Weeds in garden beds to be removed manually when visual at 10 metres or over.

LEVEL B RESERVES

DESCRIPTION

- » Medium usage area with high to medium exposure to the general public
- » Irrigated or non-irrigated parkland
- » Developed parkland with limited facilities and infrastructure

LEVEL 'B' RESERVES

Clayton Bay

- » Bay Reserve
- » Caravan Park Area

Currency Creek

- » Lions Park
- » Hall Surrounds

Goolwa

- » Barrage Road Reserves - Riverside
- » Bowls Club
- » Brooking Street Roundabout
- » Cadell Street Gardens
- » Council Depot Gardens
- » Council Office and Carpark Gardens
- » Galpin Reserve, Lush's Point (Goolwa Aquatic Club, Goolwa Yacht Club)
- » Goolwa Recreation Centre
- » Goolwa Terrace Gardens
- » Laurie Lane
- » Murray Smith Reserve
- » Town Entrance - (West)
- » Town Entrance (North - Information Bay)
- » Town Entrance (North - Ibis and School) corner

Hindmarsh Island

- » Excelsior & Wentworth Parade Junction
- » Excelsior Reserve
- » Marina Entrance (LHS)
- » Marina Entrance (RHS)
- » Princess Royal Parade North
- » Princess Royal Parade South
- » Princess Royal Parade Roundabout and Gardens
- » Tolarno Drive Roundabout
- » Wentworth Parade (East End)
- » Wentworth Parade (West End)

Langhorne Creek

- » Alfred Langhorne
- » Hall reserve at Bridge Rd and Meechi Rd
- » Information Bay
- » Potts Reserve Camping Ground

Milang

- » Cemetery
- » Daranda Tce

Mount Compass

- » Peters Terrace Reserve (Near Oval) to Tay Road
- » Roadmans Reserve

Middleton

- » Abbotts Reserve
- » Middleton Point Garden Beds
- » Middleton Shores Playspace Reserve
- » Middleton Main Street Gardens
- » Higgins Place Walkway
- » Port Elliot / Middleton Cemetery
- » Town Entrance

Port Elliot

- » Boomer Sands Street Gardens
- » Commodore Gardens
- » Dragonfly Reserve
- » Drive Inn Road Reserve
- » Oval Frontage
- » Peregrine Reserve
- » Port Elliot Dog Park
- » Pt Elliot Skate Ramp
- » Sun Orchid Reserve
- » Strangways Terrace Reserve
- » Town Entrance (East side)
- » Town Entrance (West side)

Strathalbyn

- » Aberdeen Median Strips / Garden Beds
- » Aberdeen Reserve/Walkway
- » Adelaide Rd Entrance
- » Alfred Place
- » Angus Glen Estate Entrance
- » Angus Glen Estate
- » Forrest Reserve
- » J150 Homes
- » Jude Ct
- » Parker Ave new Rail Car Park
- » Sandergrove Rd Entrance
- » St Andrews Drive medians & verges
- » Strathalbyn Cemetery
- » South Terrace Corner/High St Corner
- » Wish Estate Reserve

SERVICE COST

- » The annual rate per M² for the maintenance of Level B reserves is estimated at: \$1.27
- » There is an additional cost per M² of irrigation per annum estimated at: \$1.50
- » Tree planting (Per tube-stock tree): \$15.00

INSPECTIONS

- » Level B reserves will be assessed every six months against the requirements of this maintenance management plan with results supplied to works supervisors for actioning.

MAINTENANCE ACTIVITIES

Garden Beds	<ul style="list-style-type: none">» Dead-heading of roses to be carried as required during growing season and annual maintenance/pruning and shaping.» Annual maintenance pruning of shrubs and trees to be carried out June-July.» Garden beds to be mulched at a minimum level of 75 mm and all plants in good health and the bed is fully planted out.
Grass	<ul style="list-style-type: none">» Brush cutting, spraying herbicide and edging around structures, trees, utility boxes gardens and paths at the same time as mowing.
Infrastructure	<ul style="list-style-type: none">» When staff are working in the park and observe any damaged infrastructure, if a risk is evident, the furniture is to be made safe and the Supervisor notified within 24 hours.» Infrastructure is to be available to the public in a clean condition.
Irrigation	<ul style="list-style-type: none">» Systems to be tested one month prior to irrigation season and all defects repaired.» Irrigation systems to be monitored during the growing season and when dry areas become visible, the system is tested and the necessary repairs actioned.
Litter	<ul style="list-style-type: none">» Regular clearance to be carried out when staff are working in that location prior to moving to the next task.
Mowing	<ul style="list-style-type: none">» To intervention level of: over 125 mm, more than 50% of the area.
Paths	<ul style="list-style-type: none">» Formal paths are inspected quarterly to identify any hazards or risks above 10 mm.
Playgrounds	<ul style="list-style-type: none">» Monthly inspections by Council Officer as per checklist and Australian Standards.
Signs	<ul style="list-style-type: none">» Interpretive and directional signage to be monitored for damage, fading and vandalism.
Trees	<ul style="list-style-type: none">» Have been pruned to reduce risk to infrastructure and general public.» Fallen limbs, dead or damaged plants to be removed within 10 working days of identification.» Dead trees will be assess by the Inspector to determine the action required. If a tree is assessed as high risk to property or person, arrangements will be made to remove the tree.» If the tree is low risk and structurally sound, it may be left for habitat value.
Weed control	<ul style="list-style-type: none">» Herbicides usage to be carried out when visual at 10 metres. Weeds in garden beds to be removed manually when visual at 10 metres.

LEVEL C RESERVES

DESCRIPTION

- » Low usage area with medium to low exposure to the general public
- » Non irrigated parkland
- » Little or no facilities / infrastructure

LEVEL 'C' RESERVES

Clayton Bay

- » Entry Statements

Currency Creek

- » Currency Creek Cemetery

Goolwa

- » Admiral Terrace Embankment (South end of Wharf)
- » Albury Estate Reserve
- » Atkins Park
- » Bedford Park (Goolwa Riverfront & Hurford Reserve)
- » Birchall Road Reserve
- » Bradford Road Reserve
- » Byrnes Road & Lindsay Parade Wetlands
- » Crawford Street Reserve
- » Crowhurst Reserve
- » Garden Reserve
- » Gardiner Street Extension, crossing and reserves
- » Goolwa Skate Park
- » Heinicke Avenue Reserve
- » Hurford Reserve - Liverpool Road
- » Jack Jones Reserve
- » Jekejere Park
- » Liverpool Road (Riverfront)
- » Quebec Street (Riverfront)
- » Riverside Drive Reserve (Armfields)
- » Vanessa Close (Lagoon)
- » Woodrow Way Reserve

Hindmarsh Island

- » Ariel Court
- » Captain Sturt Parade Reserves
- » Hindmarsh Island Cemetery
- » Hindmarsh Island Monument
- » Khama Court
- » Napier Court
- » Power Box Reserve
- » Prince Alfred / Excelsior Parade Junction
- » Prince Alfred Parade Roundabout
- » Tolarno Drive Reserve
- » Queen Court Reserve
- » Sturt Ridge
- » Providence and Ventura

Langhorne Creek

- » Potts Reserve - one (Bollards)

Middleton

- » Entry Statement (Flagstaff Hill Rd & West End)
- » Middleton Creek
- » Middleton Foreshore Reserve
- » Middleton Shores Roundabout
- » Middleton Shores Stormwater Basin
- » Padman Crescent
- » Rear of Old Hall
- » Roscow Reserve
- » Set Road Reserve
- » The Surfer

Milang

- » Swamp Reserve
- » Pavey Park
- » Lang Street Reserve
- » Lake Road Jetties
- » Todds Hill
- » Milang Bay

Mount Compass

- » Basin Reserve
- » Cemetery Reserve
- » Peters Terrace Reserve (under Pines)
- » Sam Court Reserve
- » Sand Mine Road Reserve
- » School Road Reserve
- » Wetlands Paddocks

Port Elliot

- » Bayview Estate Reserves
- » Bus Parking Area
- » Carpark Mound
- » Chiton Rocks Reserve
- » Freeman's Knob
- » Hutton Street Streetscape
- » Merrilli Place Street Garden
- » Port Elliot & Middleton Cemetery
- » Rosetta Terrace Street Gardens
- » Seagull Avenue Reserve
- » Soldiers' Memorial Gardens
- » Tennis Courts – Augusta Square
- » Waterport Heritage Reserve

Strathalbyn

- » Angus Place
- » Ashbourne Pioneer Reserve
- » Bateman Street Reserve
- » BMX Area
- » Fairfield Reserve
- » Field Dr Reserve (Garden Bed)
- » Fred Natt Reserve
- » Hampden Park
- » Jane Hamilton Drive entrance
- » Kibby Circuit Reserve
- » Milne Rd Reserve
- » North Pde Wetland Pond
- » Park Tce
- » Parkside Streetgarden & walkway
- » Richardson Ave Reserve
- » Rotary Island
- » Southern Reserve
- » St Andrews Drive Cricket Pitch and Walkways
- » Stoddard Reserve
- » Stones Lane Reserve
- » Strathmont Dr Reserve
- » Sunter Street Reserve
- » Strathmont Way Reserve



SERVICE COST

- » The annual rate per M² for the maintenance of Level C reserves is estimated at: \$0.50
- » Tree planting per tree: \$15.00
- » Level C Reserves have no Irrigation (costed at \$1.50 per square metre per annum)

INSPECTIONS

- » Level C reserves will be assessed annually against the requirements of this maintenance management plan with results supplied to works supervisors for actioning.

MAINTENANCE ACTIVITIES

Grass	» Spraying herbicide around structures, trees, utility boxes, gardens and paths at the same time as mowing
Infrastructure	» When staff are working in the park and observe any damaged infrastructure, if a risk is evident, the furniture is to be made safe and the Supervisor notified within 24 hours. » Infrastructure is to be available to the public in a clean condition.
Litter	» Regular clearance to be carried out when staff are working in that location prior to moving to the next task.
Mowing	» To intervention level of: over 200 mm, more than 50% of the area.
Trees	» To be pruned biannually to reduce risk to infrastructure and general public and all fallen limbs removed. Fallen limbs, dead or damaged plants to be removed following notification or identification by the Recreation Services Inspector. » Supervisor to arrange fallen limb removals quarterly. » Dead trees will be assessed by the Inspector to determine the action required. » If a tree is assessed as high risk to property or person, arrangements will be made to remove the tree. » If the tree is low risk and structurally sound, it may be left for habitat value.
Weed control	» Recreation Services Inspector to identify any declared pest plants.
Grassed drainage areas	» Drainage structures within detention basins and drainage swales are inspected and maintained annually in preparation for stormwater, including excavation and cleaning to prevent obstructions undermining drainage performance.

LEVEL D RESERVES

DESCRIPTION

- » Very low usage area with low exposure to the general public
- » Non irrigated parkland
- » Natural and undeveloped areas

LEVEL 'D' RESERVES

Clayton Bay

- » Peirce
- » Old Clayton Cliffs Reserve
- » Clayton Cliffs Boat Ramp
- » Old Clayton Boat Ramp
- » Old Clayton Toilet Block
- » Gilbert Street Reserve
- » Pelican Waters
- » Gloria Jones Reserve

Goolwa

- » Bike Path (Behind Dump)
- » Bird Hide (Riverfront)
- » Bradford Road Reserve (Native)
- » Byrnes Road & Washington Street Wetlands
- » Daniel Avenue
- » Decastro Square
- » Gray Square
- » Kestrel Court Reserve
- » Kightly Reserve
- » River Breeze Estate
- » River Breeze Estate Lawrence Street
- » River Breeze Estate Stormwater
- » Saratoga Drive Reserve
- » Walter Newell Reserve

Hindmarsh Island

- » Arcadia Avenue Riverfront
- » Barker Road Reserve
- » Excelsior Parade Roundabout
- » Excelsior Parade Riverfront
- » Shannon Place Reserve
- » Valmai Terrace Reserve
- » Maranoa Place Reserves

Middleton

- » Boettcher Road Reserve
- » Chibnall Rd Reserve
- » Hero Avenue Reserve
- » Newell Avenue Reserve
- » Offshore Drive
- » Surfers Parade Reserve

Milang

- » Refuse Depot Area
- » Clayton Side Entry
- » BMX track/Town Entry Reserve
- » Jupiter
- » Sterling Street Detention Basin
- » Gun Club Reserve
- » Daranda/Stirling/McDonald Street

Mount Compass

- » Cemetery Reserve (Back)
- » Lanacoona Road Garden

Port Elliot

- » Bayview Estate Reserves
- » Beyond Pathway
- » Beyond Tree Plantations
- » Boomer Sands Car Park
- » Cinema Court & Oval Walkway
- » Port Elliot Showgrounds, Heritage Reserve & Cameron Street
- » Ratalang/Basham Beach Regional Park
- » Waterport Road Cemetery
- » Watsons Gap to Beyond Path

Strathalbyn

- » Avenue Road Basin
- » Bateman St Basin
- » Belvidere Ave Reserve
- » Berrysmith Dr Reserve
- » Burnside Reserves
- » Childrens Reserve
- » Fairfield Drain
- » Forrest Road Reserve
- » Formby Crt Reserve
- » Garwood Ave Reserve & Shone Court
- » Gollan Ave Reserve
- » Kerslake Crt Reserve
- » Lockaba Rise Reserve
- » Mt Barker Road Reserve
- » Radio Tower Reserve
- » Riverside Rd Reserve
- » Roper Road Reserve
- » Sission Rd Reserve
- » Trainers Way Reserve
- » Wolf Ave Reserve
- » Albyn Tce Median
- » Albyn Tce Triangle

SERVICE COST

- » The annual rate per M2 for the maintenance of Level D reserves is estimated at: \$0.27
- » Level D Reserves have no Irrigation (costed at \$1.50 per square metre per annum)

INSPECTIONS

- » Level D reserves will be assessed annually against the requirements of this maintenance management plan with results supplied to works supervisors for actioning.

MAINTENANCE ACTIVITIES

Grass	<ul style="list-style-type: none">» Spraying herbicide around structures, trees, utility boxes gardens and paths to coincide with mowing
Infrastructure	<ul style="list-style-type: none">» When staff are working in the park and observe any damaged infrastructure, if a risk is evident, the furniture is to be made safe and the supervisor notified within 24 hours.» Infrastructure is to be available to the public in a clean condition
Litter	<ul style="list-style-type: none">» Regular clearance to be carried out when staff are working in that location prior to moving to the next task.
Mowing	<ul style="list-style-type: none">» Slashing to fire prevention standards in fire danger season; OR» When grass height is > 500mm, over more than 50% of area during off season.
Trees	<ul style="list-style-type: none">» To be pruned annually to reduce risk to infrastructure and general public and all fallen limbs removed.» Fallen limbs, dead or damaged plants to be removed following notification or identification by the inspector.» Supervisor to arrange fallen limb removals quarterly.» Dead trees will be assessed by the Inspector to determine the action required.» If a tree is assessed as high risk to property or person, arrangements will be made to remove the tree.» If the tree is low risk and structurally sound, it may be left for habitat value
Weed control	<ul style="list-style-type: none">» Recreation Services Inspector to identify any declared pest plants.



BOAT RAMPS, MARINAS, JETTIES AND SURROUNDS

DESCRIPTION

- » Boat ramps and jetties including any adjacent garden beds and grass areas not leased to private users.

RESERVES UNDER THIS CATEGORY

- » Beacon 19 Boat Ramp, Goolwa Jet Ski Park Ramp, Mundoo Channel Road Boat Ramp

SERVICE COST

- » None Identified

INSPECTIONS

- » Monthly inspection of assets in the summer months and quarterly in the winter months for assessment against this maintenance management plan, small to medium defects to be forwarded to the Coastal Maintenance Office. Major defects are to be referred to the Asset Manager.

MAINTENANCE ACTIVITIES

Weed Control	<ul style="list-style-type: none">» Spraying of weeds with a herbicide or hand pulled on hard surface areas and surrounding infrastructure when visual at 10 metres.» Inspector to identify any declared pest plants.
Litter	<ul style="list-style-type: none">» Regular litter clearance is carried out weekly from October to April and monthly from May to September. Remove foreign debris and blow down structures.
Grass	<ul style="list-style-type: none">» Brush cut around structures to maintain a level of no higher than 150mm
Signs	<ul style="list-style-type: none">» Interpretive and directional signage to be monitored for damage, fading and vandalism.
Infrastructure	<ul style="list-style-type: none">» Includes: decking's, handrails, bollards, pylons, ladders, lights, concrete ramps, bins, dog dispensers, fencing and boat fenders.» If a risk is evident, the furniture is to be made safe and the Coastal Maintenance Officer is notified within 24 hours.» Infrastructure is to be available to the public in a clean condition.
Erosion	<ul style="list-style-type: none">» A visual inspection of surrounding banks for indications of erosion that could lead to long term asset failures.» Reed, sand and silt build up in and around watercourse is identified:
Car Parks	<ul style="list-style-type: none">» Pavements and lead tracks to boat ramps and jetties are clear of debris and hazards identified.
Vegetation	<ul style="list-style-type: none">» Trees and shrubs to be trimmed back 250 mm from infrastructure and access areas.



RAILWAY CORRIDOR

DESCRIPTION

- » The Railway Corridor is a contiguous easement to allow the operation of the steam ranger coastal rail experience. This area is under the care and control of Steam Ranger. Interface with the railway corridor is governed by a Public Rail and Road Crossings Interface Agreement between Steam Ranger and Alexandrina Council.
- » This Interface Agreement establishes the roles, responsibilities and standards to be applied between the Rail Infrastructure Manager (Steam Ranger) and the Road Manager (Council) for coordinating the management of safety of the interfaces between rail and road infrastructure managed by each Party

RESERVES UNDER THIS CATEGORY

- » None Identified

SERVICE COST

- » None Identified

INSPECTIONS

- » Performance is monitored under the rail activities agreement with Steam Ranger

MAINTENANCE ACTIVITIES

General responsibilities	<ul style="list-style-type: none">» Pavement Marking» Advance warning signage» Line of Sight and visibility of advanced warnings
Level crossing	<ul style="list-style-type: none">» Regular litter clearance is carried out weekly from October to April and monthly from May to September. Remove foreign debris and blow down structures.
Risk assessment	<ul style="list-style-type: none">» Risk Assessments on each interface are required to be completed at least annually, or at any time the status of the interface changes



OTHER RESERVES

DESCRIPTION

'Other Reserves' are less defined parcels of land that are not formally recognised as community land, but hold importance for landscape, vegetation and biodiversity outcomes. These reserves often form part of rural road reserves and are cared for in consultation with the Commissioner of Highways. Management is often governed by Section 26 of the Highways Act.

SERVICE COST

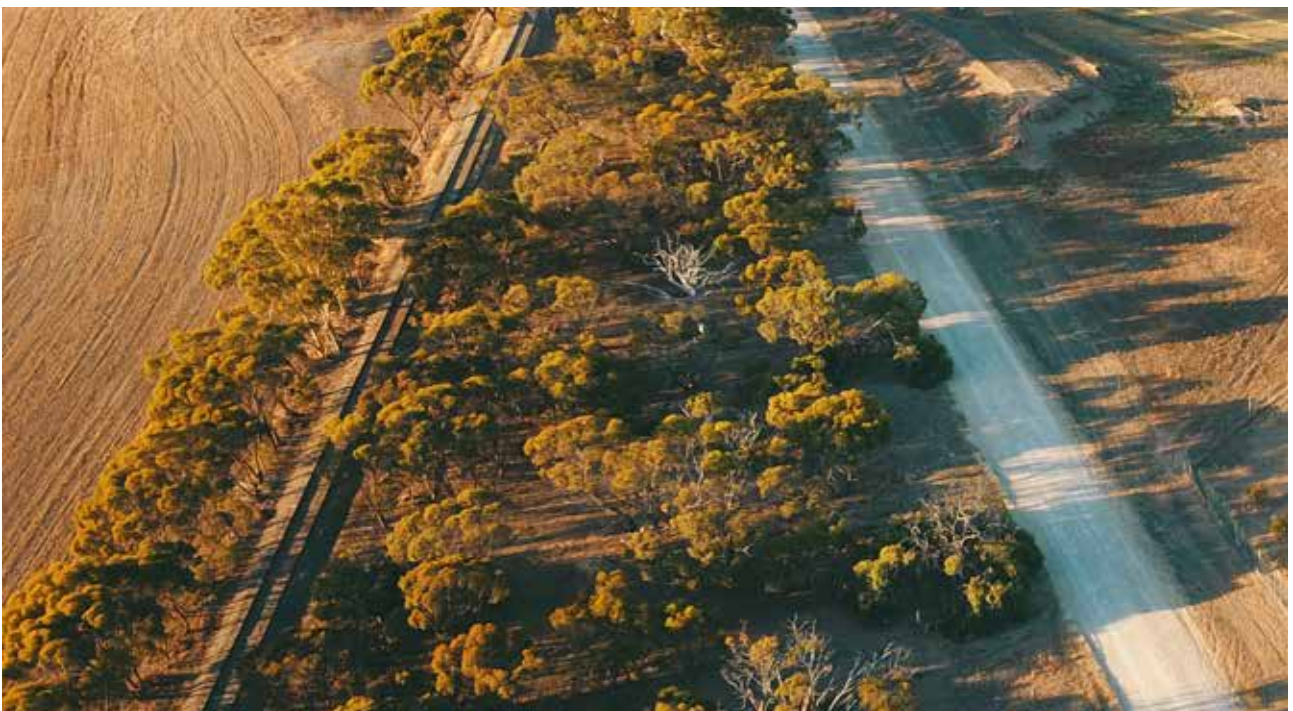
- » The annual rate per M2 for the maintenance of Other Reserves is estimated at: \$0.15
- » Other Reserves have no Irrigation
- » Tree planting is undertaken by the Commissioner of Highways

INSPECTIONS

Inspections are infrequent or as required

MAINTENANCE ACTIVITIES

Grass	» Slashing to fire prevention standards in fire danger season
Litter	» Removal of hard waste and roadside dumping
Trees	» Road reserves pruned every three years » Pruning schedule informed by risk assessments undertaken each site visit
Weed control	» Recreation Services Inspector to identify any declared pest plants.



MAINTENANCE PERFORMANCE GUIDE

WHILE SERVICE LEVELS HAVE BEEN CREATED FOR COUNCIL PARKS AND GARDENS MAINTENANCE ACTIVITIES, CONDITIONS CAN VARY THE RATE OF CHANGE AT EACH PARK. THEREFORE PERFORMANCE GUIDES ARE IN PLACE TO SUPPORT NON ROUTINE MANAGEMENT OF EACH SERVICE LEVEL.

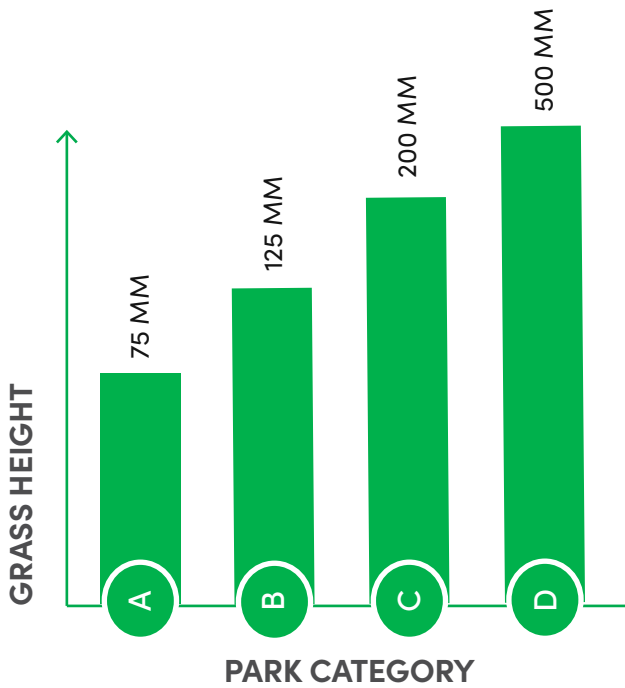
The following section outlines the 'intervention' points at which maintenance activities will be undertaken. It establishes things such as maximum grass heights, maximum encroachment of branches over pathways, response times for assessing and replacing damaged furniture and the tolerance for weeds within garden beds and grassed areas.



GRASS CUTTING

WHAT WE WANT TO ACHIEVE:

» To have well maintained grass areas that support the intended function of each open space

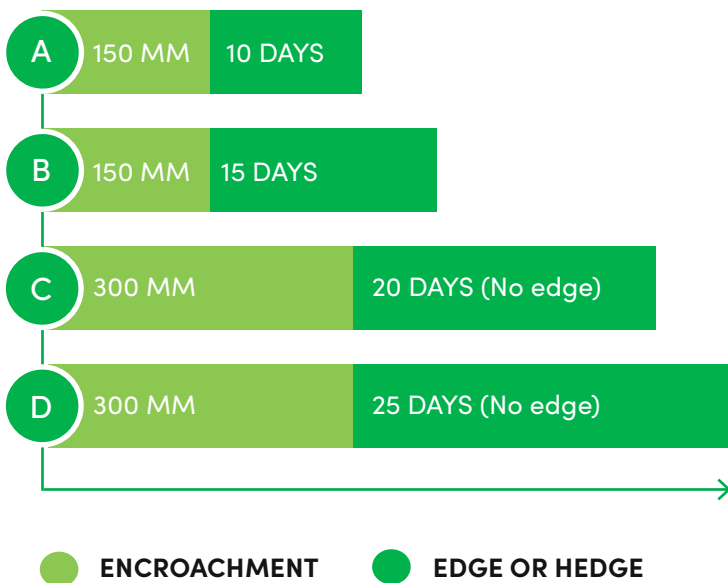


EDGING AND HEDGING

WHAT WE WANT TO ACHIEVE:

» Grasses and hedges do not encroach pathways and guttering by more than 300mm.

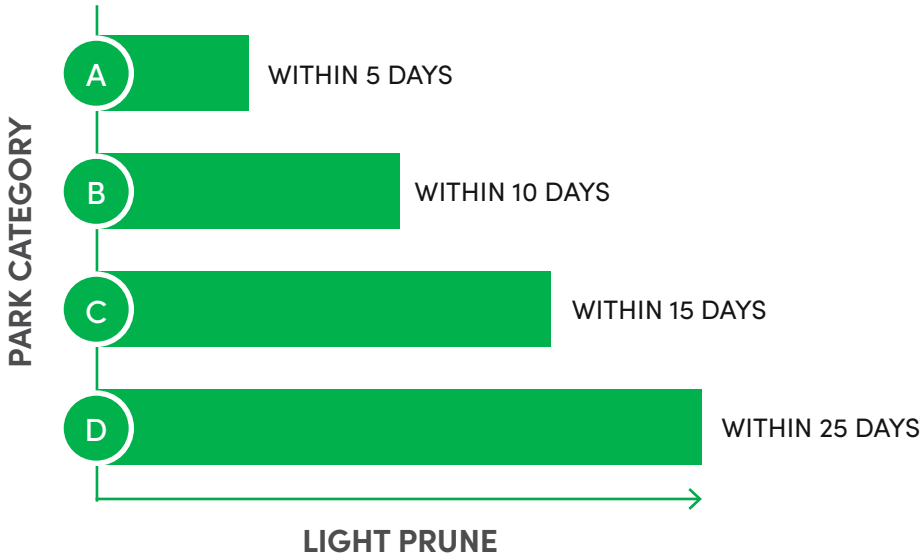
PERFORMANCE GUIDE BY SERVICE STANDARD



LIGHT TREE PRUNING

WHAT WE WANT TO ACHIEVE:

- » Tree branches are 2400mm above pathways and don't encroach pathways by more than 300mm

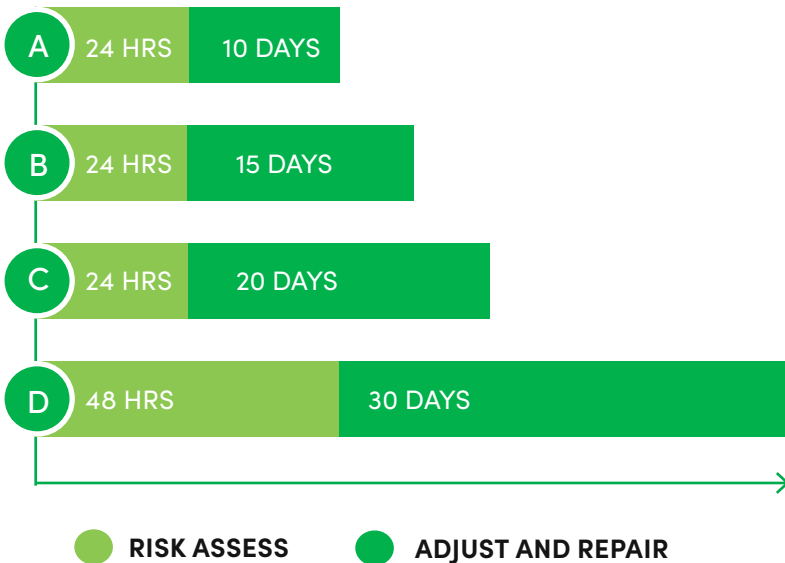


REMEDIAL PRUNING OR REMOVAL

WHAT WE WANT TO ACHIEVE:

- » Manage trees that are dead or close to dying, pose public nuisance because of size, species, location or condition, cannot be protected by pruning, interfere with other trees or present a safety concern.

PERFORMANCE GUIDE BY SERVICE STANDARD

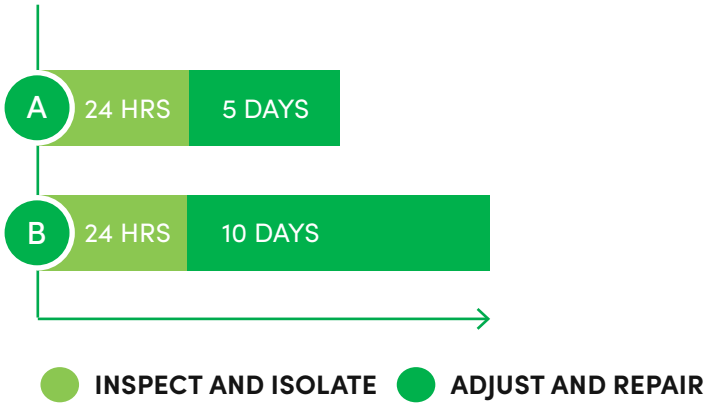


IRRIGATION MAINTENANCE

WHAT WE WANT TO ACHIEVE:

- » To effectively manage irrigation systems that pose a hazard to open space users (eg. inground sprinkler protruding more than 50mm, irrigation pop-ups not working, pipe found to be broken or leaking, vandalised assets).

PERFORMANCE GUIDE BY SERVICE STANDARD

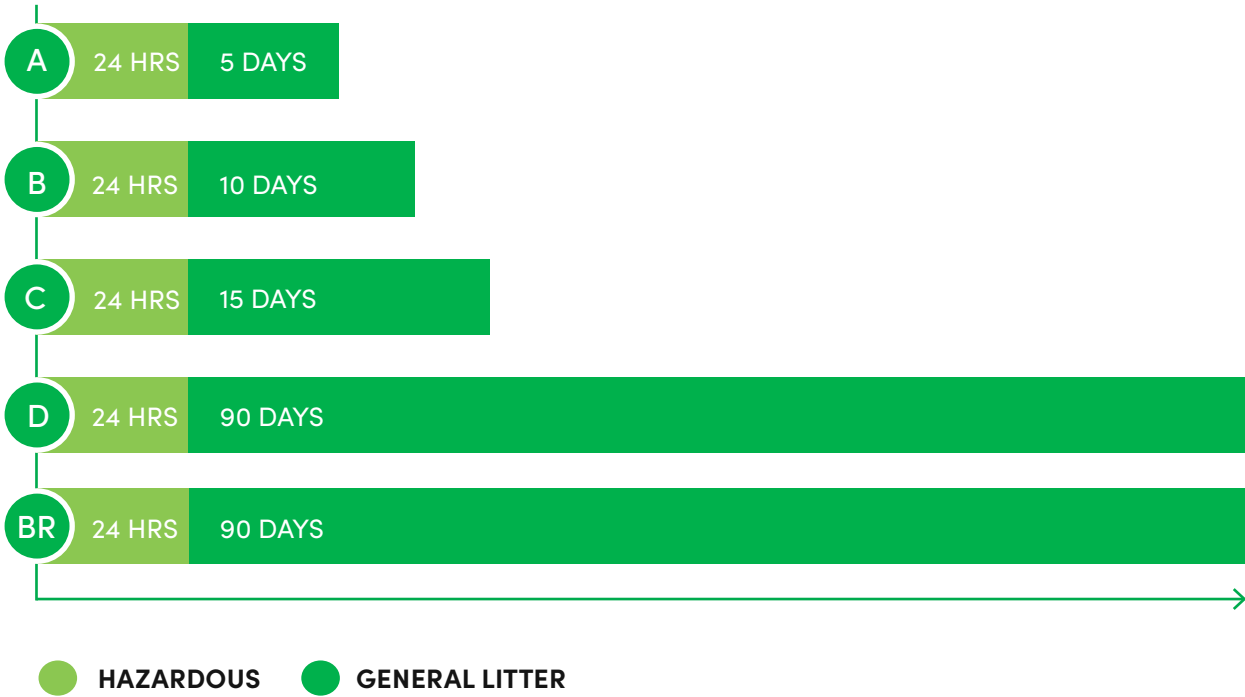


LITTER DEBRIS AND RUBBISH

WHAT WE WANT TO ACHIEVE:

- » Manage the presence and impact of debris and litter (including sharps) on open space areas.

PERFORMANCE GUIDE BY SERVICE STANDARD

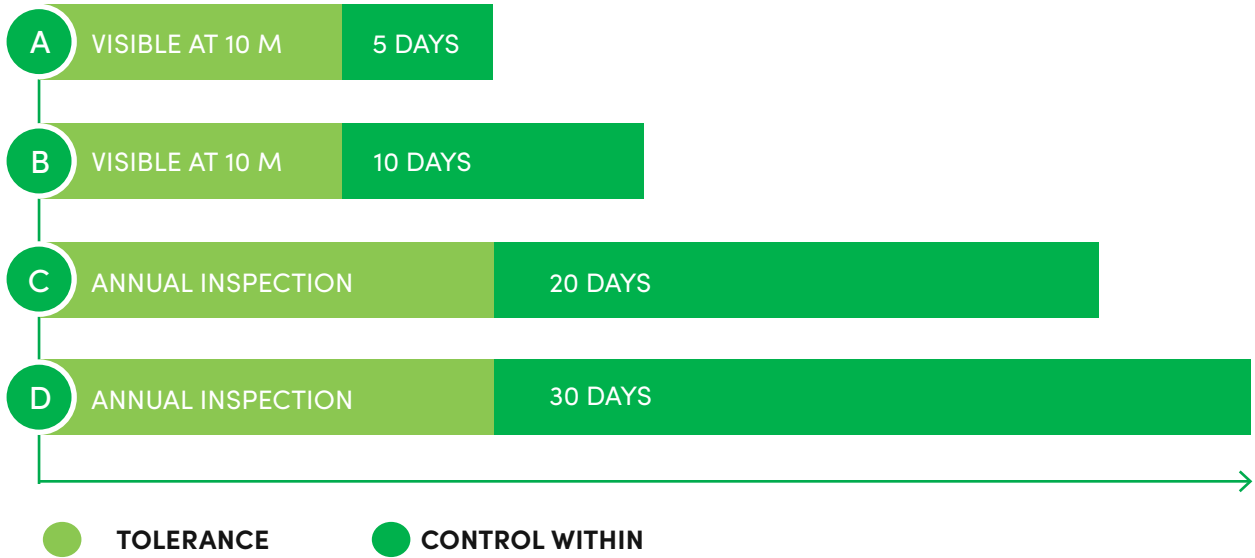


WEED CONTROL

WHAT WE WANT TO ACHIEVE:

» Visual and practical minimising of weed species in open space areas.

PERFORMANCE GUIDE BY SERVICE STANDARD



FURNITURE

WHAT WE WANT TO ACHIEVE:

» Furniture and infrastructure to be provided to the public in a clean and safe condition

PERFORMANCE GUIDE BY SERVICE STANDARD

